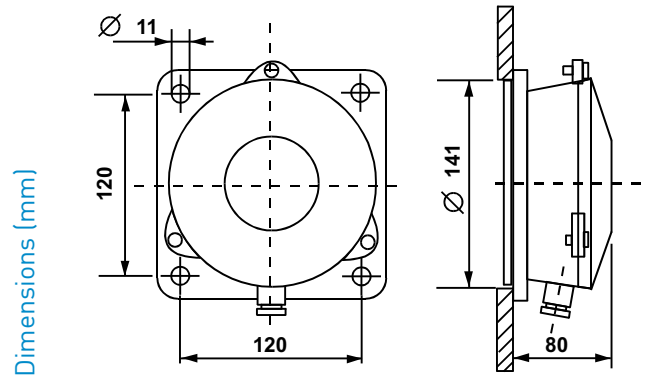


ASM2

Membrane level controls for dusts and granules

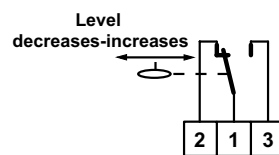
Suitable to control automatically the dusts and granules level in storages and tanks, batchers, etc. Used to control visual or acoustic alarms devices, to control the loading or unloading, for starting or stopping the conveyors, batchers, etc.



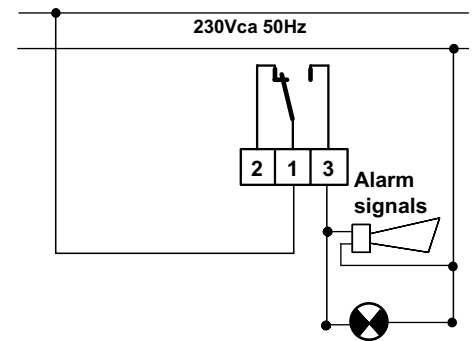
	Level differential mm	Level differential control and change mm	Microswitches number	Working temperature	Protection degree
ASM2	50 ÷ 100 operation and stop 30 ÷ 50 release and start	20 ÷ 50	2	-20 ÷ 70 °C	IP54

ELECTRICAL FEATURES

Commutation of two single-pole microswitches.



EXAMPLE OF ELECTRICAL WIRING FOR MAXIMUM LEVEL ALARM SIGNALS



Nominal insulation tension	Ui 380Va.c.
Continuous duty nominal current	Ith 10A
Operating nominal current Ie	220V - 250Va.c.
Resistive load	AC-12 - 10A
Inductive load	AC-15 - 3A
Direct current	DC-13 0,2A -

HOMOLOGATION AND STANDARDS

Conformity with CEI EN 60947-5-1 standards.

INSTALLATION

Flange connection.

OPERATION

Elastic membrane operation, in contact with the material.

FEATURES

Aluminium alloy body.

Output connections with shockproof thermoplastic cable gland G 1/2" .

Nitrile rubber membrane, on request in teflon or other special materials.

Working temperature: $-20 \div 70$ °C.

Storage and transport ambient temperature: $-25 \div 70$ °C.

Unit weight: 1,4 Kg.